

Summit County Influenza Surveillance, 2008-2009 – Supplemental Surveillance Week 43 (August 16- August 22, 2009) CDC Week 33

Influenza activity is still present in Summit County although it continues to decline. For this reporting week, there was only one positive laboratory test reported for the week (positivity rate = 2%). There were no confirmed influenza hospitalizations reported for this week. All schools are closed for the summer but reporting continues from one workshop.

Ohio's influenza activity level is still at **sporadic activity**. The activity level defines geographic distribution. It does not relate to the number of cases or severity of illness.

From the CDC's influenza report for week 33, national influenza activity was stable or declining in most areas of the country. Pneumonia and influenza deaths were below the epidemic threshold. Visits to physicians for influenza-like illness were below the threshold. The laboratory positivity rate was 18%. About 99% of all subtyped influenza labs reported to CDC was 2009 pandemic A(H1N1). Influenza activity: Widespread – 2 states and Puerto Rico (same as last week); Regional – 13 states (up from 8 last week); Local – 10 states and D.C. (down from 14 last week); Sporadic – 24 states (down from 26 as last week); No activity – 1 state. There were 5 influenza-associated pediatric deaths reported during this week, all due to 2009 pandemic A(H1N1) influenza.

From the WHO, the seasonal influenza activity is decreasing in many southern hemisphere countries although tropical regions (Central America and tropical areas of Asia) are seeing increasing or sustained high levels of influenza activity. The pandemic A(H1N1) influenza strain quickly became the predominant influenza strain in nearly all of the temperate regions of the southern hemisphere with the exception of South Africa. South Africa experienced an early influenza season with A(H3N2) influenza. However after a peak in early to mid June, the A(H3N2) began to decline and the pandemic A(H1N1) influenza strain appeared and has now become the dominant subtype there.

The cumulative number of confirmed human cases of avian A(H5N1) reported to WHO (as of August 11) is 438 cases and 262 deaths.

2008-2009 Participant Categories

3 residential institutions	5 Summit County emergency departments	8 laboratories	1 high school
2 pharmacy chains (20 stores)	University of Akron infirmary	7 nursing homes	1 workshop
11 family practice offices	10 elementary schools	3 middle schools	
AHD Health Data Management	EpiCenter		
CDC = Centers for Disease Control and Prevention		WHO = World Health Organization	

***Numbers on Y-axis of the graph reflect the following: (Note: the logarithmic graph does not show zero figures)

Number of influenza or influenza-like diagnoses by FP Centers, EDs, University of Akron infirmary, nursing homes, institutions

Total number of absentees (diagnosis not specified) for selected elementary, middle, high schools and workshop
Number of positive influenza cultures and antigen tests from area labs

Total number of four influenza antiviral medications sold in pharmacy chains

Number of pneumonia/influenza deaths reported to CDC by the Akron Health Department (these deaths occurred within the city of Akron, may include non-Akron and non-Summit County residents)

Number of confirmed influenza hospitalizations at Summit County hospitals

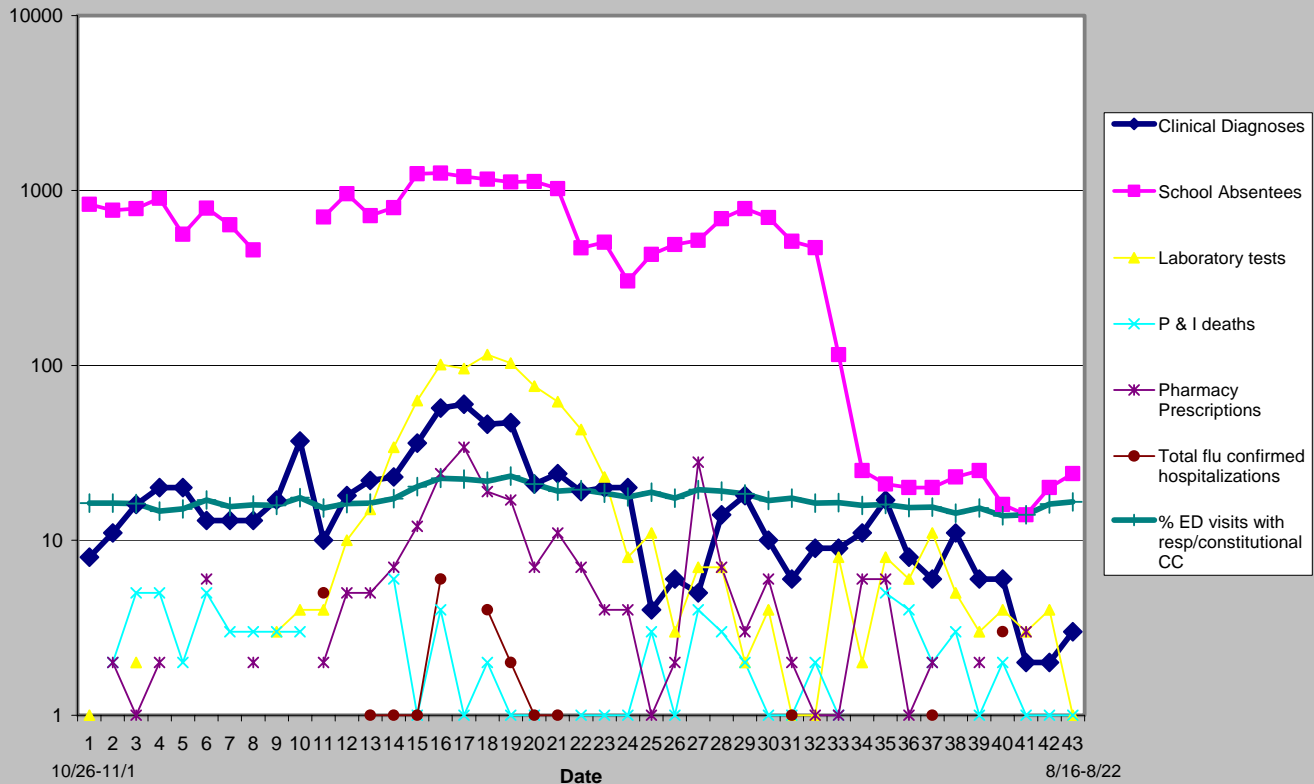
The percent of respiratory & constitutional visits per week from two hospitals that electronically report ED visits which are categorized into respiratory or constitutional syndrome based on chief complaint.

****Reporting from the participants may not be complete each week. Numbers may change as updated reports are received.**

Dr. M. Erme, Akron Health Department, 330-375-2145, Office of Disease Control and Surveillance web site
<http://www.ci.akron.oh.us/Health04/Epidemiology/control.htm>

August 30, 2009

**Summit County Influenza Surveillance 2008-2009
Week 43 (week ending 8/22/2009, CDC week 33)**



2009 Pandemic A H1N1 Influenza Summary

As July 31, 2009, the CDC is only reporting cumulative H1N1 hospitalizations and deaths. The CDC estimates that there have been over one million 2009 pandemic A H1N1 influenza cases in the United States. The number of cumulative hospitalizations is 8843 and the number of reported deaths is 556. The website for CDC information is <http://www.cdc.gov/h1n1flu/>.

As of July 13, 2009, the World Health Organization no longer required countries with community wide 2009 pandemic A(H1N1) influenza transmission to submit regular reports. There have been over 209,438 cases with at least 2185 deaths in 177 countries. There have been reports of sporadic H1N1 oseltamivir resistance. The WHO website is <http://www.who.int/csr/disease/swineflu/en/index.html>

As August 5, 2009, the Ohio Department of Health, in accordance with CDC guidelines, discontinued individual reporting of 2009 pandemic A(H1N1) cases. They will monitor overall influenza activity via established influenza surveillance methods. The ODH website gives complete Ohio influenza information: http://www.odh.ohio.gov/landing/phs_emergency/swineflu.aspx.

Summit County has had 14 confirmed 2009 pandemic A(H1N1) influenza cases. Individual cases of H1N1 influenza are not reportable. Influenza associated hospitalizations (from any strain) are reportable to the local health department.

Please check the websites of the three health departments for information.
Summit County Health District: www.schd.org; Akron Health Department: www.ci.akron.oh.us;
Barberton Health District: www.barbertonhealth.org