

Summit County Influenza Surveillance, 2008-2009 – Supplemental

Surveillance Week 45 (September 6-September 12, 2009)

CDC Week 36

Next week will be the first week of the 2009-2010 Summit County Influenza Surveillance.

Influenza activity and respiratory illnesses appear to be increasing in Summit County. While the number of positive lab tests (4 from the reporting laboratories) did not increase, the number of tests that have been ordered has been increasing over the past several weeks. There have been more persons coming to the emergency departments with constitutional and respiratory complaints (especially cough symptoms).

Ohio's influenza activity level has increased to **regional activity**. The activity level defines geographic distribution. It does not relate to the number of cases or severity of illness. There have been several clusters of influenza-like illnesses investigated around the state. The Ohio Department of Health laboratory has confirmed 23 positive PCR tests for 2009 pandemic A(H1N1) influenza since the beginning of September. None of those positive tests were from Summit County. The Ohio Department of Health laboratory is only testing hospitalized cases and influenza-like illness clusters that local health departments investigate. They have not isolated any seasonal H1N1 or H3N2 influenza.

From the CDC's influenza report for week 36, national influenza activity increased. Pneumonia and influenza deaths were below the epidemic threshold but visits to physicians for influenza-like illness were above the threshold in seven of the 10 geographic regions. The laboratory positivity rate was 18.2% (last week was 20.5%). About 99% of all subtyped influenza labs reported to CDC was 2009 pandemic A(H1N1). Influenza activity: Widespread – 21 states (up from 11 last week); Regional – 9 states and Puerto Rico (down from 13 last week); Local – 11 states and D.C. (up from 10 last week); Sporadic – 8 states (down from 14 as last week); No activity – 1 state (down from 1 state last week). There were two influenza-associated pediatric deaths reported during this week due to 2009 pandemic A(H1N1) influenza.

From the WHO, the 2009 pandemic A(H1N1) influenza virus continues to be the dominant influenza virus worldwide. Parts of the United States, Canada, and Europe are seeing increased influenza activity.

2008-2009 Participant Categories

3 residential institutions	5 Summit County emergency departments	8 laboratories	1 high school
2 pharmacy chains (20 stores)	University of Akron infirmary	7 nursing homes	1 workshop
11 family practice offices	10 elementary schools	3 middle schools	
AHD Health Data Management	EpiCenter		

CDC = Centers for Disease Control and Prevention WHO = World Health Organization

***Numbers on Y-axis of the graph reflect the following: (Note: the logarithmic graph does not show zero figures)

Number of influenza or influenza-like diagnoses by FP Centers, EDs, University of Akron infirmary, nursing homes, institutions

Total number of absentees (diagnosis not specified) for selected elementary, middle, high schools and workshop

Number of positive influenza cultures and antigen tests from area labs

Total number of four influenza antiviral medications sold in pharmacy chains

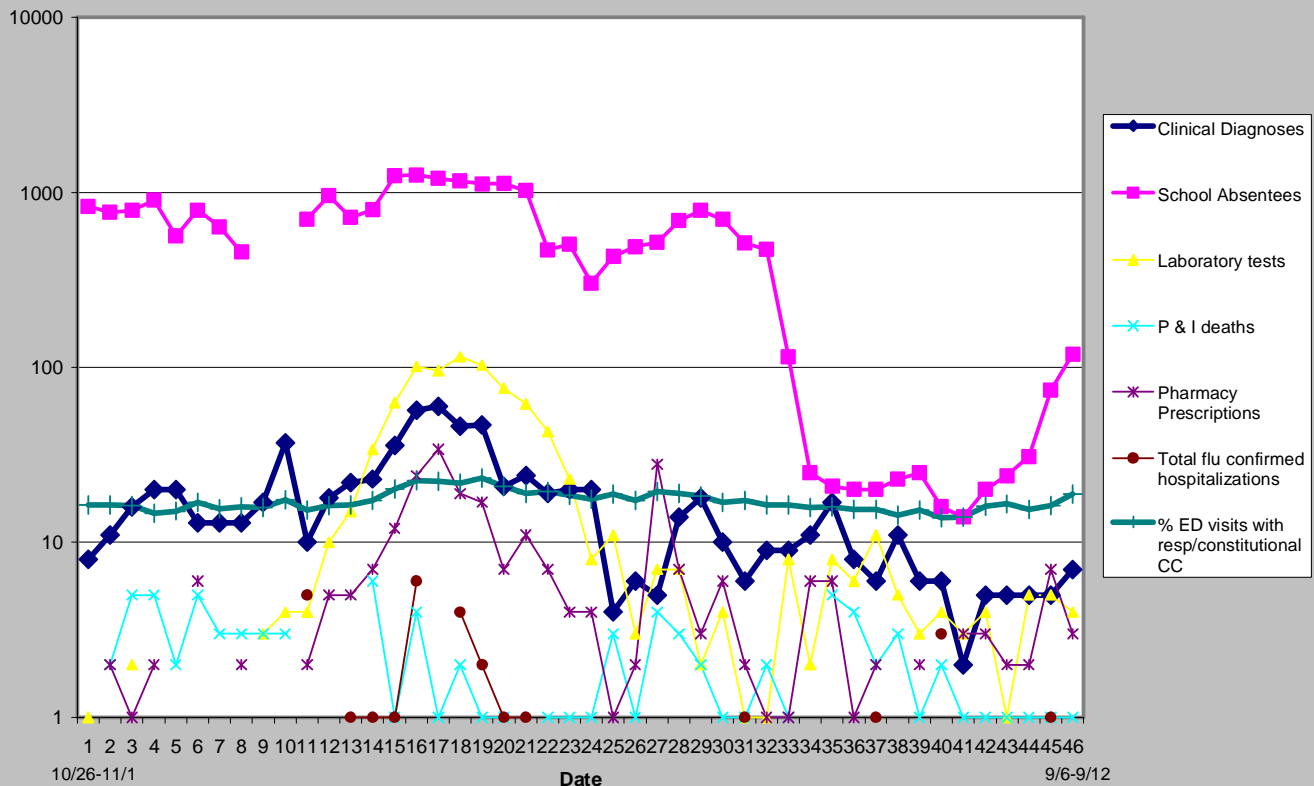
Number of pneumonia/influenza deaths reported to CDC by the Akron Health Department (these deaths occurred within the city of Akron, may include non-Akron and non-Summit County residents)

Number of confirmed influenza hospitalizations at Summit County hospitals

The percent of respiratory & constitutional visits per week from two hospitals that electronically report ED visits which are categorized into respiratory or constitutional syndrome based on chief complaint.

****Reporting from the participants may not be complete each week. Numbers may change as updated reports are received.**

**Summit County Influenza Surveillance 2008-2009
Week 46 (week ending 9/12/2009, CDC week 36)**



2009 Pandemic A H1N1 Influenza Summary

To assess the total influenza burden, the CDC is monitoring hospitalizations with a positive influenza test or hospitalizations for influenza and pneumonia syndromes. Confirmation for 2009 pandemic A(H1N1) influenza is not necessary. From August 30-September 12, the number of hospitalizations were 4569 and 364 deaths. The website for CDC information is <http://www.cdc.gov/h1n1flu/>.

According to the World Health Organization's information as of September 18, there have been over 296,471 cases with at least 3486 deaths. This is an underestimation since countries no longer have to report individual case counts. Pandemic (H1N1) influenza virus continues to be the predominant circulating virus of influenza, both in the northern and southern hemisphere. The epidemiology of the disease caused by the 2009 pandemic A H1N1 influenza virus in the southern hemisphere is very similar to what was described in the United States this spring. The WHO website is <http://www.who.int/csr/disease/swineflu/en/index.html>

As August 5, 2009, the Ohio Department of Health, in accordance with CDC guidelines, discontinued individual reporting of 2009 pandemic A(H1N1) cases. Ohio has had three deaths. The ODH website gives complete Ohio influenza information: http://www.odh.ohio.gov/landing/phs_emergency/swineflu.aspx.

Summit County has had 14 confirmed 2009 pandemic A(H1N1) influenza cases. Individual cases of H1N1 influenza are not reportable. Influenza associated hospitalizations (from any strain) are reportable to the local health department.

Summit County has created a new influenza website for information. The website is www.summitflu.org.